

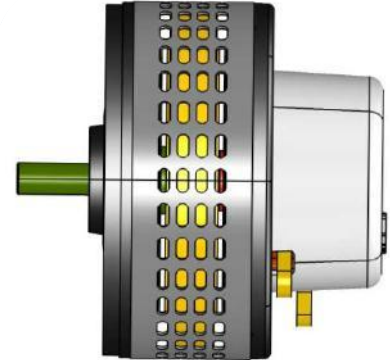
LEM-130

Overview:

The LEM-130 is a 6 Pole Axial Gap D.C. brush motor suitable for light traction and robotics applications.

Example applications include railway service vehicle, scooters, mopeds and small vehicles.

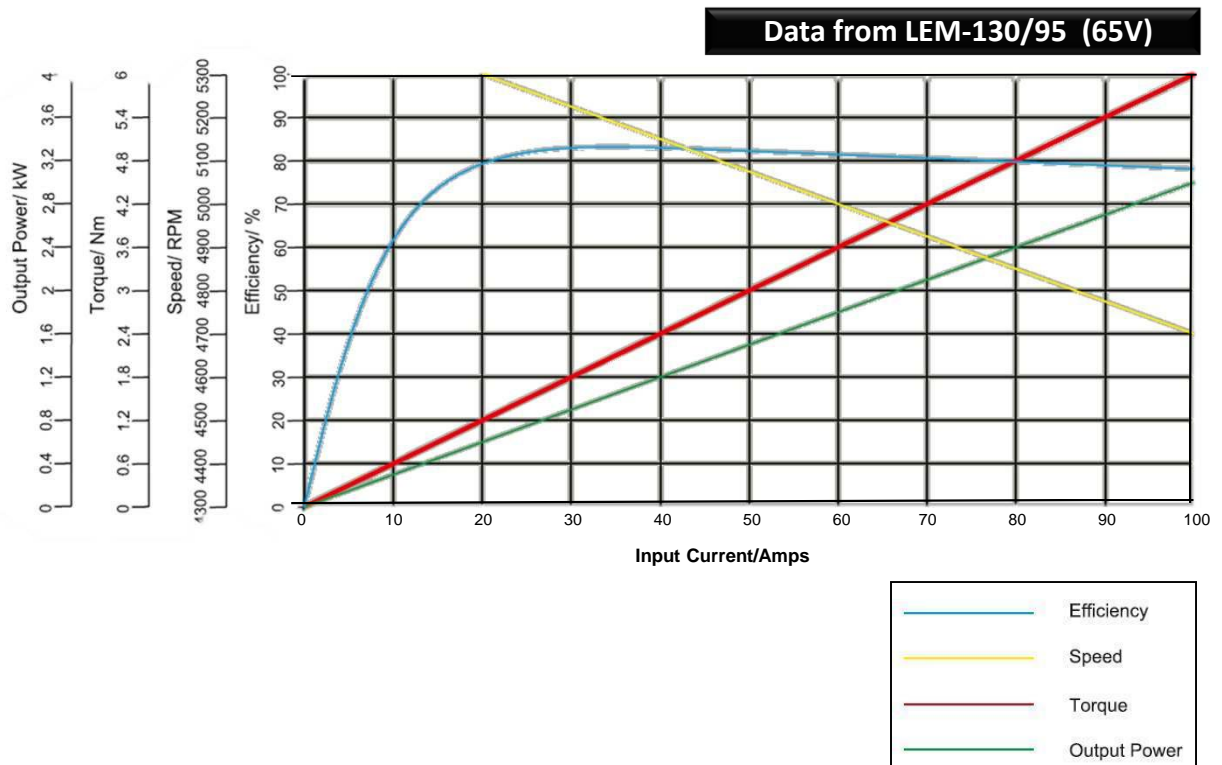
The LEM-130 is available with two options: 95 and 95S

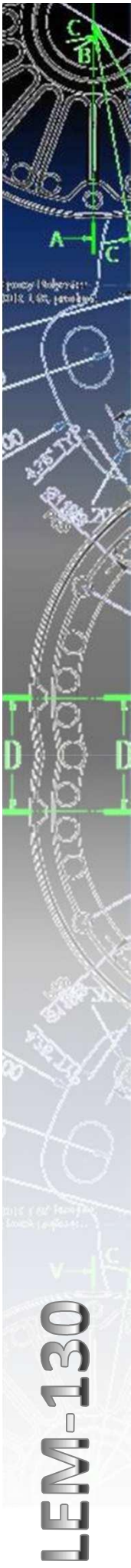


Features:

- High efficiency (up to 88%)
- Lightweight design
- Simple electronic control
- Long brush Life
- Rugged Construction
- CE Marked
- Ip20 rating
- Voltage 12 to 48v

Typical Technical Data Curve :

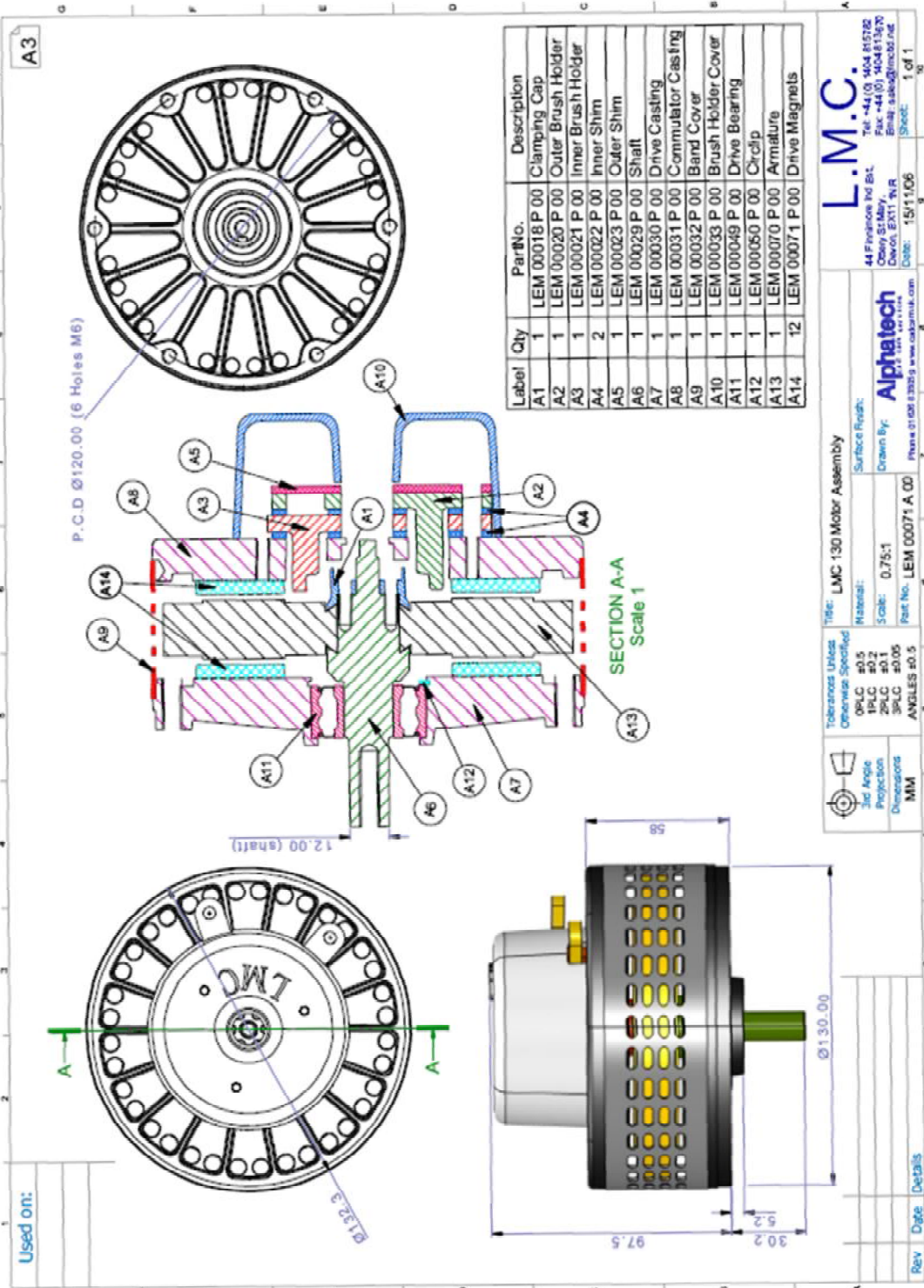




LEM-130

Technical Data:

Motor	No Load Current	Torque Constant	Speed Constant	Armature Resistance DC	Armature Inductance @ 15kHz	Armature Inertia	Peak Power	Peak Efficiency	Peak Current	Rated Power	Rated Speed	Rated Voltage	Rated Current	Rated Torque
	A	Nm/A	Rpm/V	mΩ	μH	Kgm ²	kW	%	A	kW	Rpm	V	A	Nm
95	6	0.0631	138	32.5	14	0.0116	3	82	100	2.27	4968	36	75	4.35
95S	6	0.0631	138	32.5	14	0.0117	4	88	100	3.02	6624	48	75	4.35



L.M.C.
44 Finances Rd. Bxl Tel: +41 (0) 4648 81528
Oley St. Bxl Fax: +41 (0) 4648 13670
Dewon, EX11, UK Email: sales@lmc.ch Date: 15/11/06 Sheet: 1 of 1

Alphatech
Material: _____ Surface Finish: _____
Scale: 0.75:1
Part No. LEM 00071 A 00
Name of the drawing: www.cadpartner.com

Tolerances Unless Otherwise Specified:
DIN/ISO #0.5
ISO #0.2
ISO #0.1
ISO #0.05
ANGLES 0.5

3rd Angle Projection
Dimensions in MM

Title: LMC 130 Motor Assembly



TOPS (Agent/Distributor)
23 rue JJ Rousseau, 75001 PARIS (France)
Phone: +33 (0)1 42 51 79 83 - Fax: +33 (0)1 42 51 51 83
www.tops-intl.com

